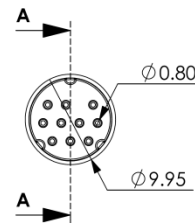
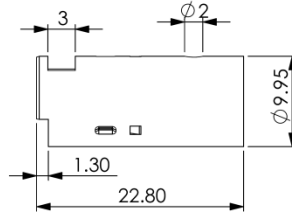
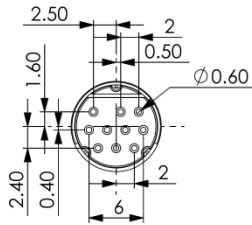
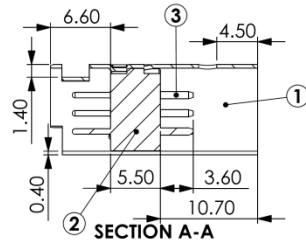
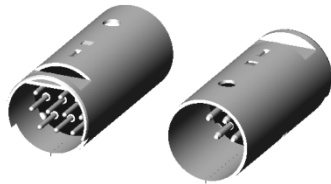


# YE-1110MPL 10P MINI DIN CABLE PLUG FOR MOLDING



## • MATERIALS :

1. SHELL COVER :  
BRASS NICKEL PTD.
2. HOUSING:  
PBT.
3. TERMINALS:  
BRASS SILVER PTD.

## • SPECIFICATION :

- rating :  
100V AC or 12V DC 2A
- insulation resistance :  
MIN 50MΩ at 250V DC
- voltage withstand :  
250V AC, 1 minute

俞昌有限公司 YEU TSANG CO. LTD.	品名: ITEM :	TOP MINI DIN CABLE PLUG for MOLDING		一般公差 .X +/-0.25 .XX +/-0.10	SHEET: 1 1	單位: unit:	mm	日期: date:	'08/03/13	繪圖: drwn by:	DanielShyr
	料號: PART NO	YE-1110MPL	圖號: DRW NO.				比例: scale:	2:1	版本: version:	V. 1.0	核准: aprvid by:

COPYRIGHT BY YEU TSANG